



KJ15 Series ODM Peristaltic Pump

■ Lead Fluid KJ15 series ODM peristaltic pump suitable for various specifications of pump tubing, continuous working flow range 0.013~170ml/min, interval working flow range 0.013~504ml/min.

■ Front cover prevents external objects from entering the pump head, easy to load and unload. Made of transparent material, easy to observe the internal operating conditions.

■ The main parts of pump head are made of high-performance plastic, which is resistant to corrosion and has high mechanical strength.

■ Two methods installation: fixed and compatible panel and bottom plate installation .

■ Matching stepper motor, DC motor, AC motor, etc. to meet a variety of applications.

Pump Head Material

Body	PPS
Roller	PVDF
Roller shaft	SS304
Front cover	PC

Pump Head Flow Parameters

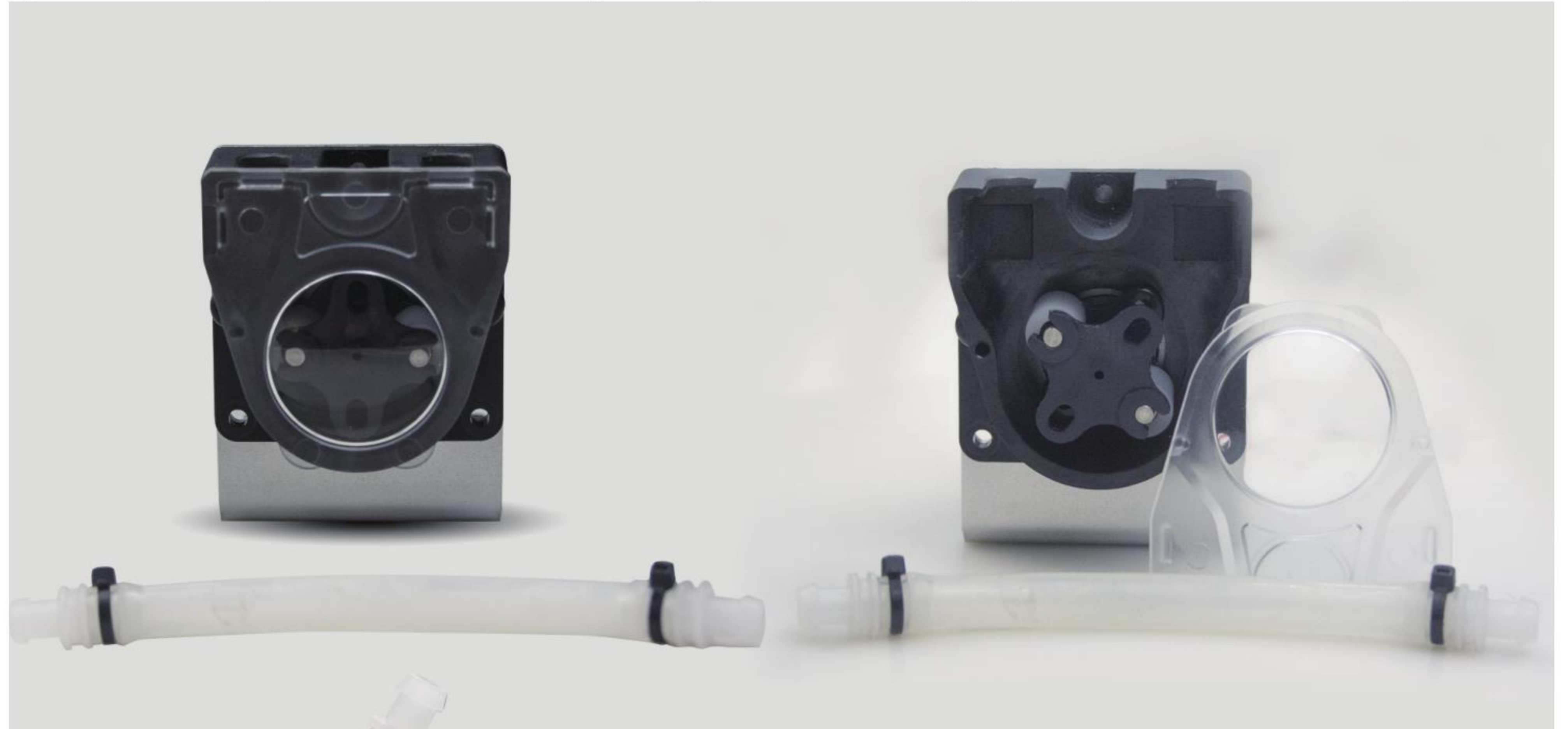
Tube material: Silicone, Pharmed, Norprene, Viton

Wall thickness 1.6mm

ID (mm)	1.6	2.4	3.2	4.8	6.4
	14#	19#	16#	25#	17#★
mL/Revolution	0.13	0.29	0.54	0.97	1.70
mL/min(Continuous working max.100rpm)	13	29	54	97	170
mL/min(Interval working max.300rpm)	39	87	162	291	504

★ 17# tube material is only suitable for silicone.

Above parameters are obtained by using silicone tube to transfer pure water under normal temperature and pressure, in actually using it is effected by specific factors such as pressure ,medium.



Clamping method: tube stopper fixed

Pump Head Specification

Channel	1 Channel
Roller	2 (4 optional)
Tube clearance	Fixed
Installation tube method	Built-in connector
Transmission pressure	≤0.15MPa
Working environment	Temperature 0-40°C, humidity < 80%
Net weight	120g
Motor	42\57 stepper motor, DC gear motor, AC synchronous motor

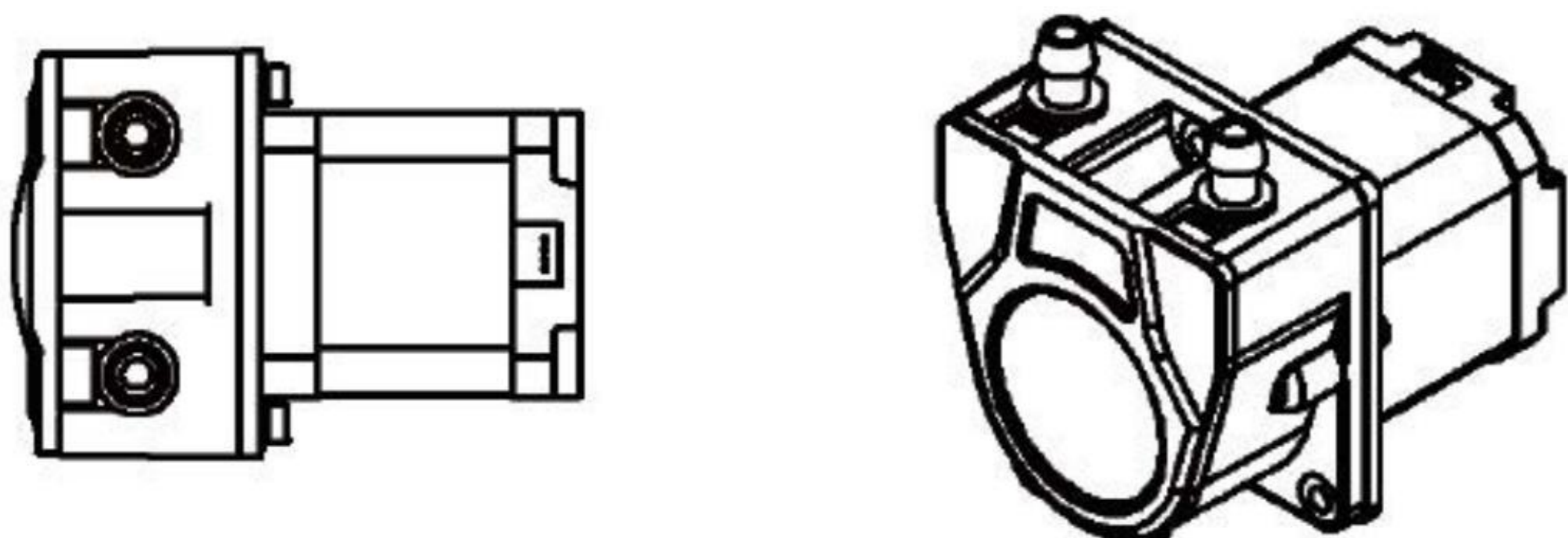
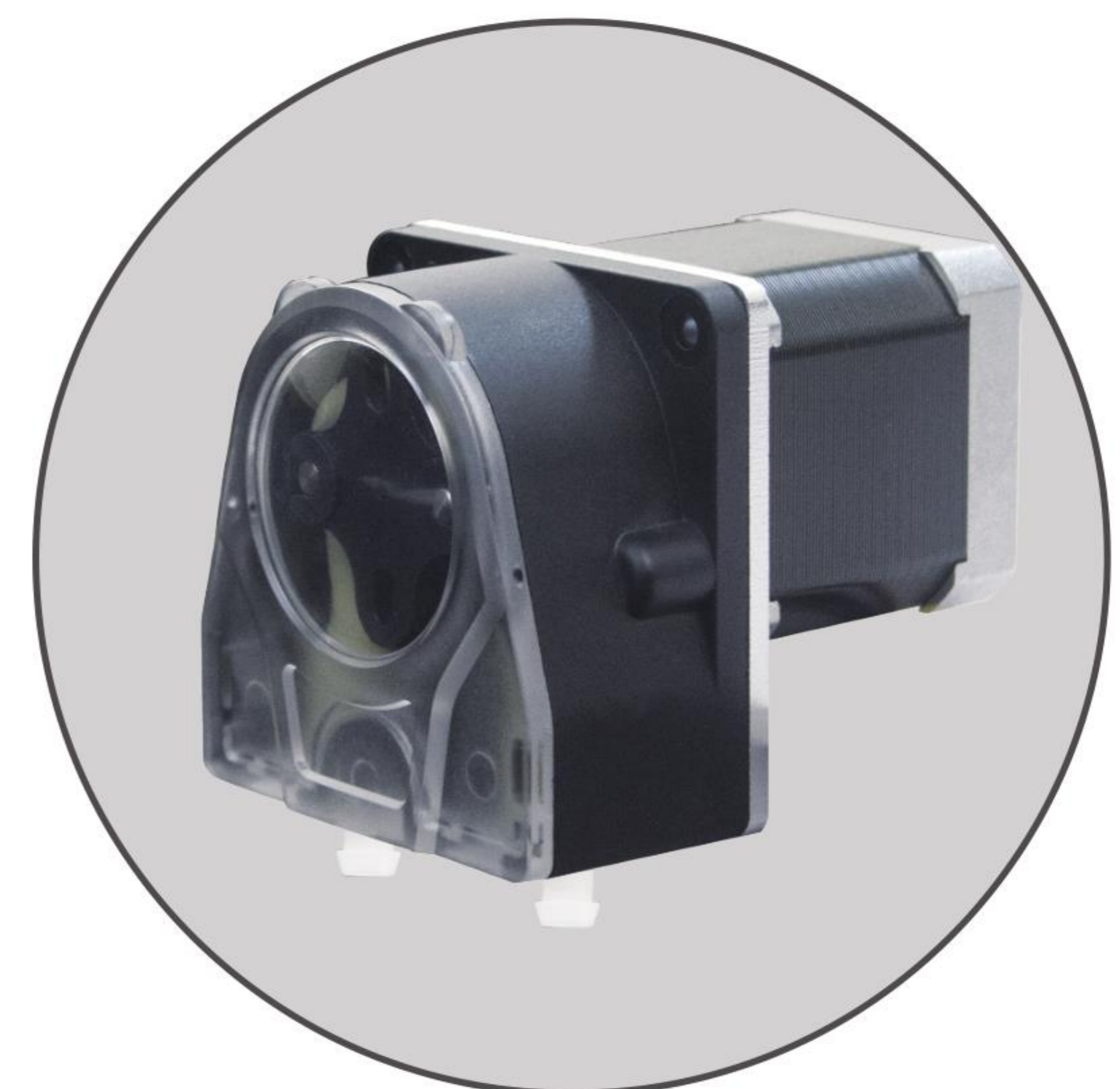
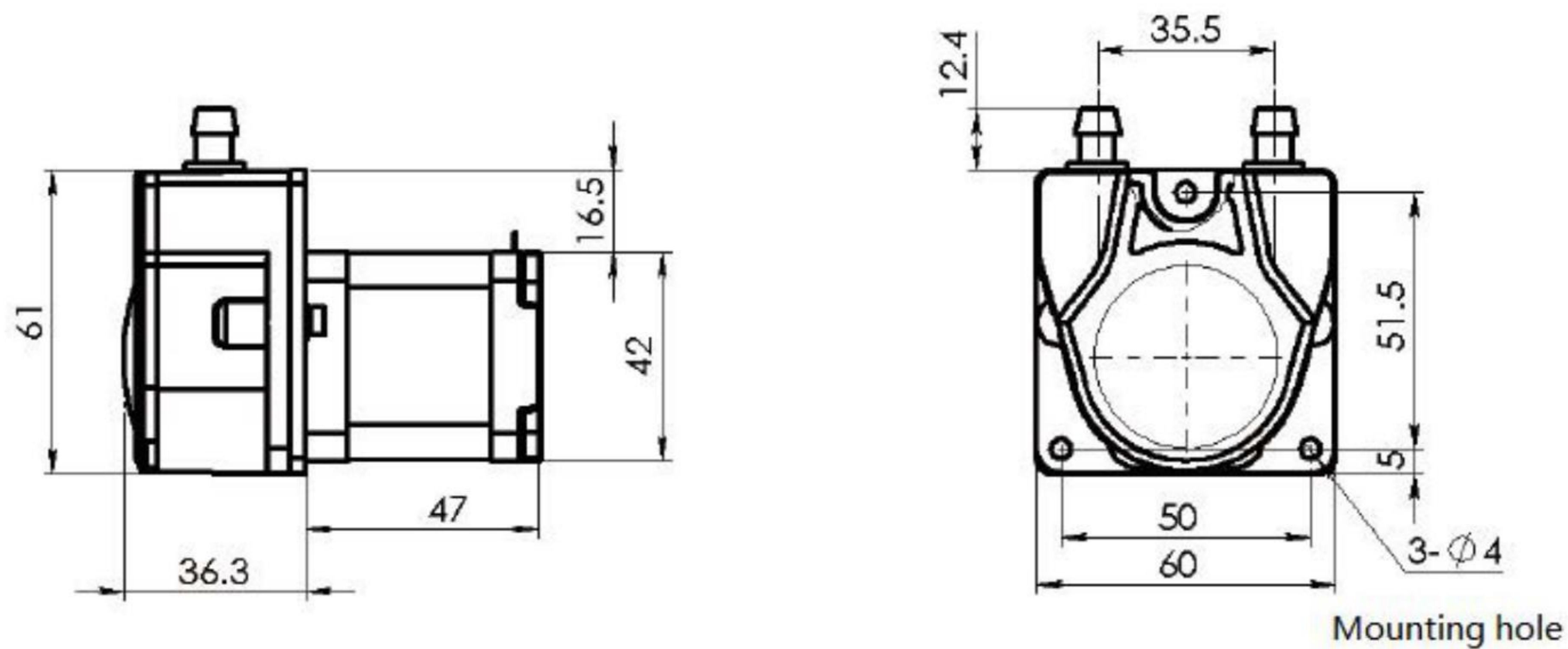
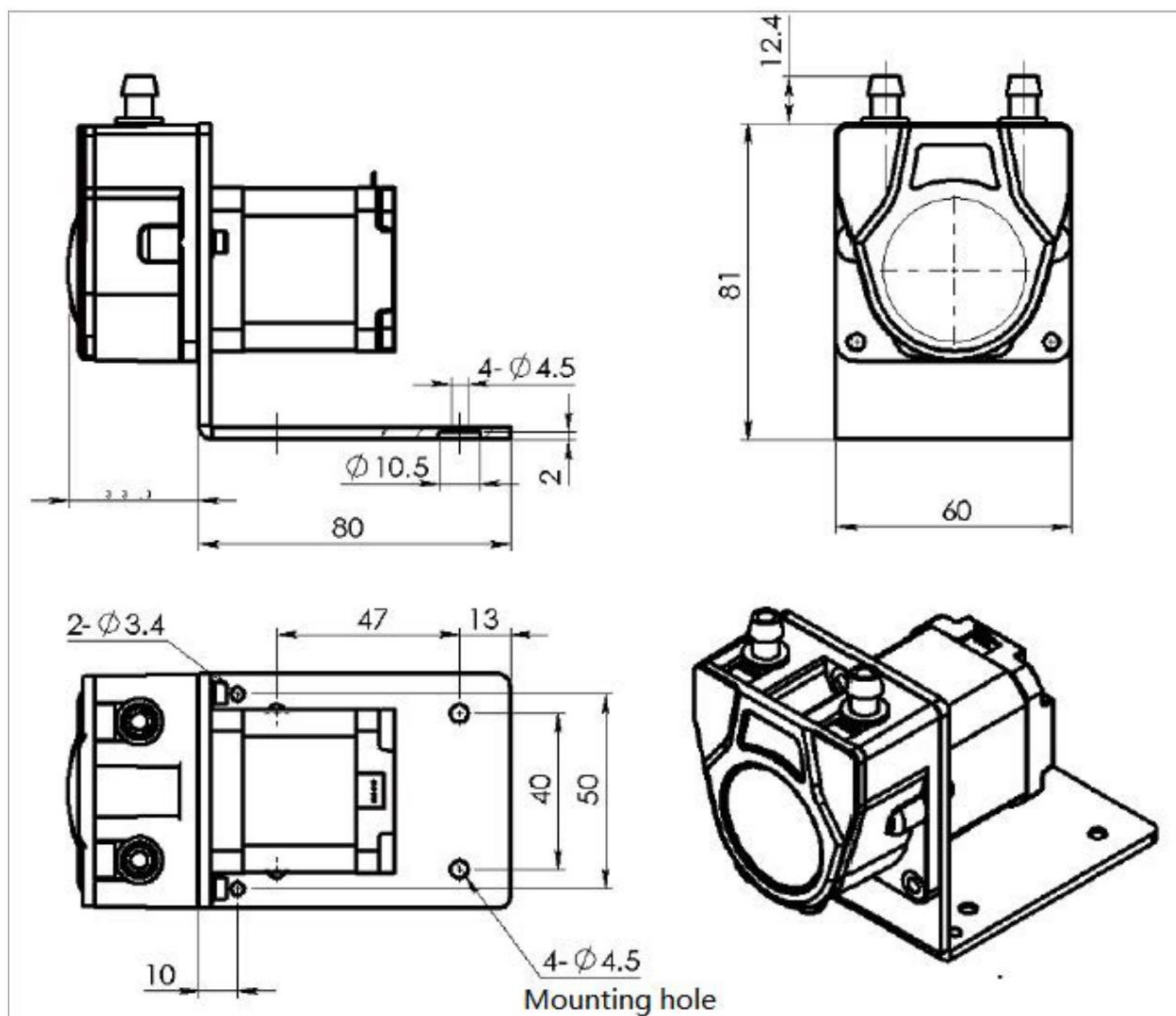
Motor Specification

42 Stepper motor	Speed 0.1-100rpm Step angle 1.8° \ phase 2 \ phase voltage 6.44V \ phase current 0.7A \ phase resistance 9.2Ω±10% \ phase inductor 16mH ±20%
DC gear motor	Applicable power supply: DC24V/10W Standing speed (rpm) 107, 140, 200 Applicable power supply: DC12V/10W Standing speed (rpm) 111, 125 Speed accuracy (rpm) : ≤±10%

Dimension (42 stepper motor)

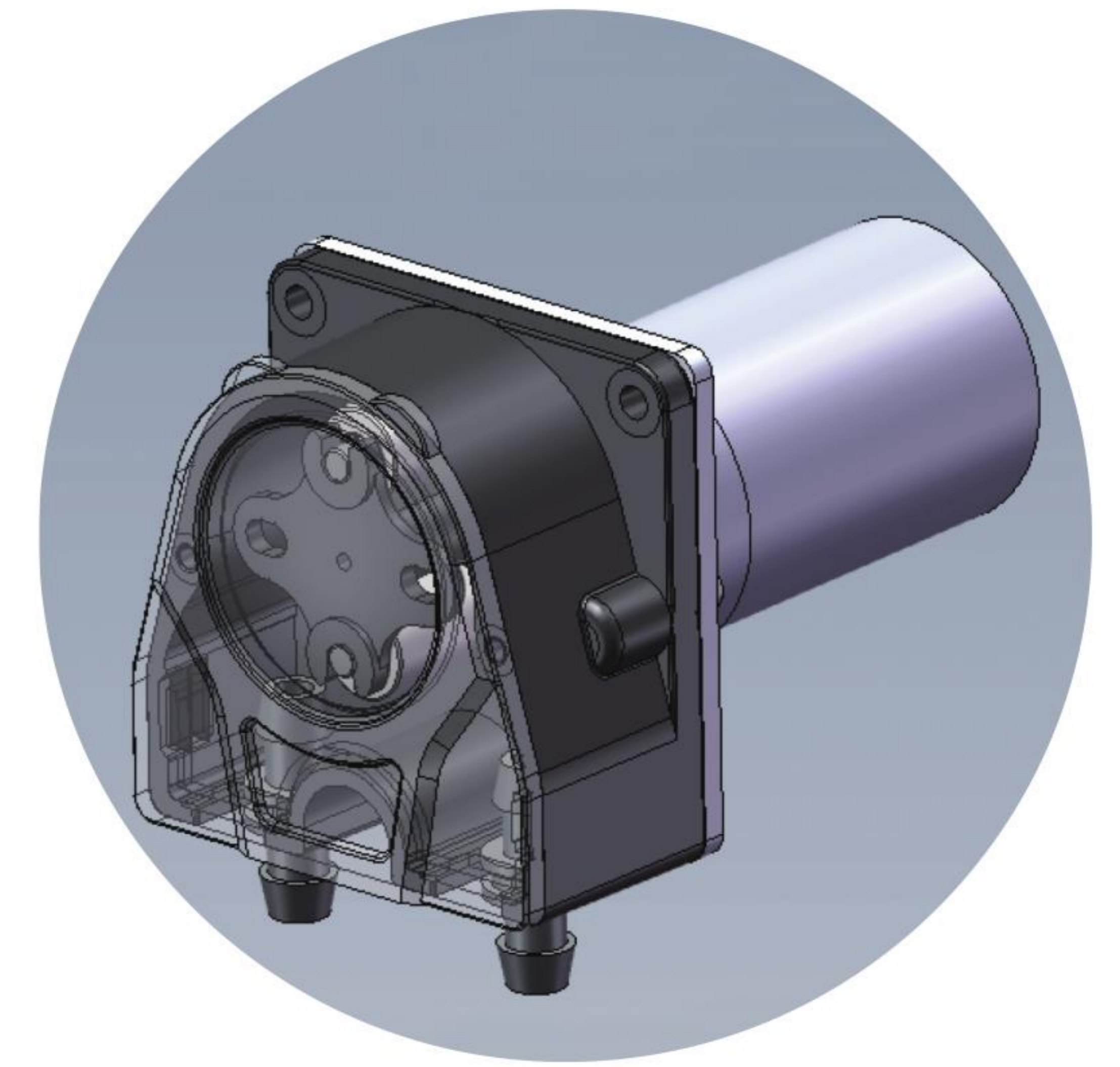
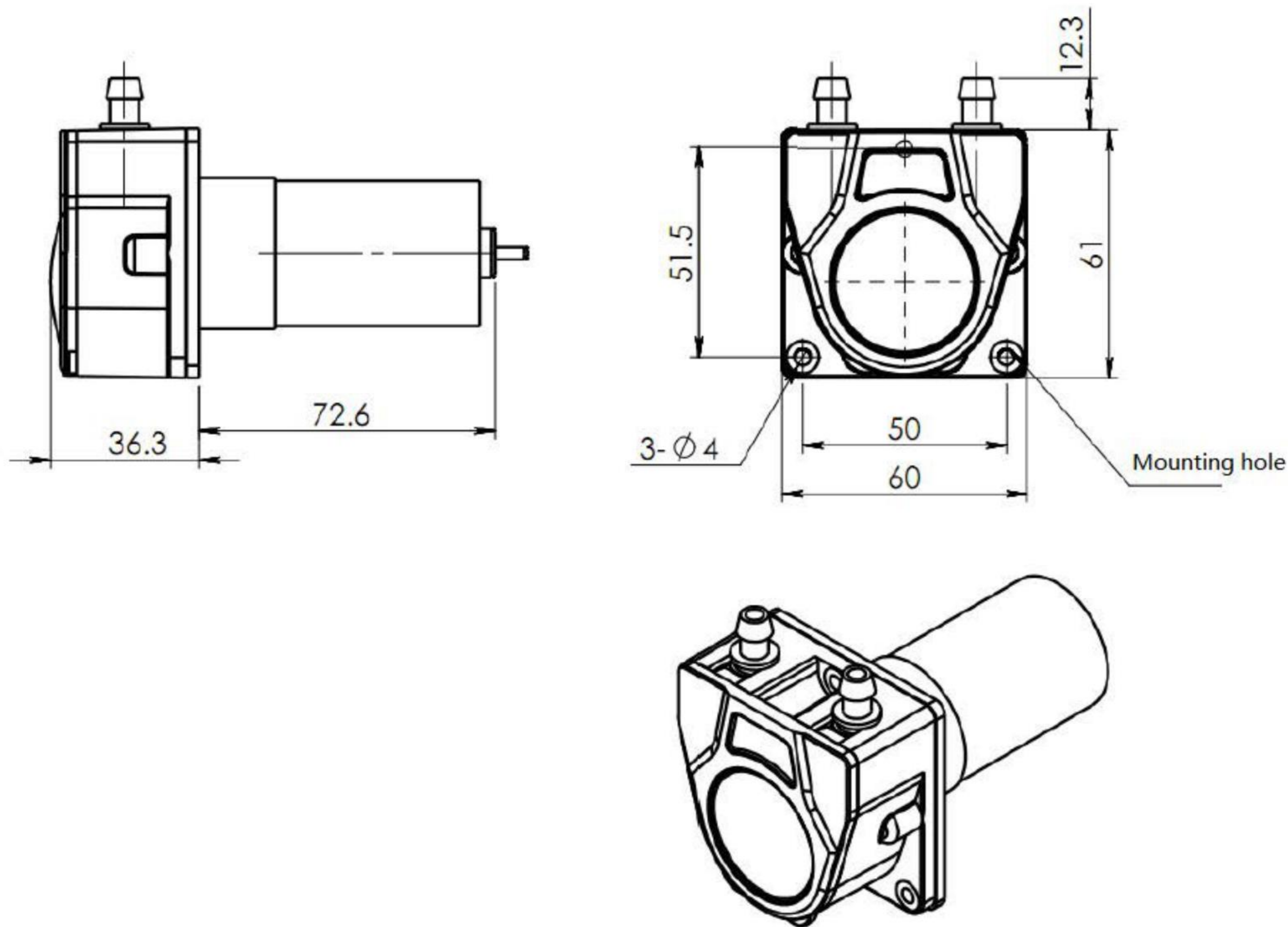
Bottom plate installation

UN: mm



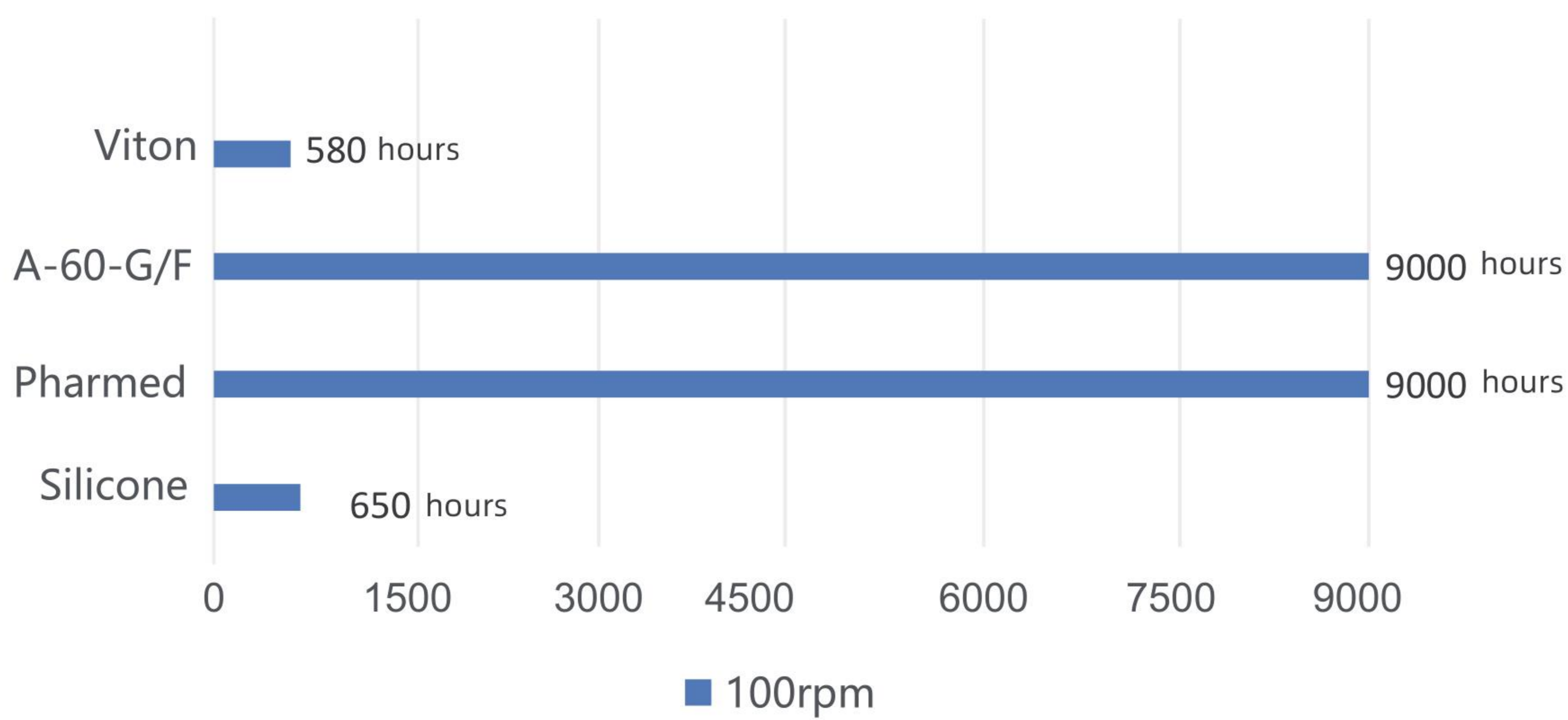
Panel installation

UN: mm



Tube Lifetime Comparison Table

KJ15 pump head tube lifetime comparison table



Important tips:

- A. For longer tube lifetime, choose thicker wall tube and low speed.
- B. For larger flow, choose larger ID tube and in high speed.
- C. For higher precision, choose smaller ID tube and medium to high speed.
- D. For higher suction and back pressure, choose thinner ID and thicker wall tube and low speed.

Statement: The final explanation right of above information belongs to Lead Fluid.